

ARACHNIPOD ACCESSORIES & EXPANSION KITS

Expansion kits are pre-assembled components designed to expand the capabilities of your Arachnipod.



Spike Foot (90-0120)

Reversible foot. Spiked tip for rocky terrain, round end to avoid damaging or penetrating surfaces.

Included in the Advantage and Full Accessory Kits, or sold separately.



Soft Ground Shoe (34-0032)

Fits over the spike foot to limit ground penetration in soft ground applications.

Included in the Full Accessory Kit, or sold separately.



Hold Down Stake (16-1046-0)

Attaches to the Standard Foot and is driven into the ground to prevent unwanted movement.

Included in the Advantage and Full Accessory Kits, or sold separately.



M12 Tru-Bolt (68-0041)

12mm Tru-Bolts can be used to secure the Standard foot to concrete and hard rock surfaces.

Included in the Full Accessory Kit, or sold separately.



Quad Plate (07-1027-0)

Used to form a quadpod or A-Frame with Lazy Leg.

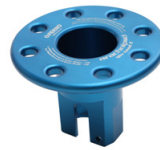
Included in the Lazy Leg Kit, Advantage and Full Accessory Kits, or sold separately.



Reverse Head (90-0121)

Used to form an A-Frame with Lazy Leg.

Included in the Advantage and Full Accessory Kits, or sold separately.



Gin Head 2 (03-1037-0)

Combines with a Lazy Leg to form a gin pole / monopod. Also usable as an anchor plate.

Included in the Advantage and Full Accessory Kits, or sold separately.



Rigging Plate (26-0007-0)

Used to provide additional stabilisation attachment points in an A-Frame. Not for live loads.

Included in the Advantage and Full Accessory Kits, or sold separately.



Equipment Bracket (90-0119)

Attaches to a leg to provide an extra tie-off or anchor point. Arachnipod WLL reduces to 220kg if a leg is used as an anchor. **Supplied in the Full Accessory Kit, or sold separately.**



Step (07-1026-0)

Attaches to the leg and used to access the head to adjust rigging without lowering the system.

Included in the Full Accessory Kit, or sold separately.